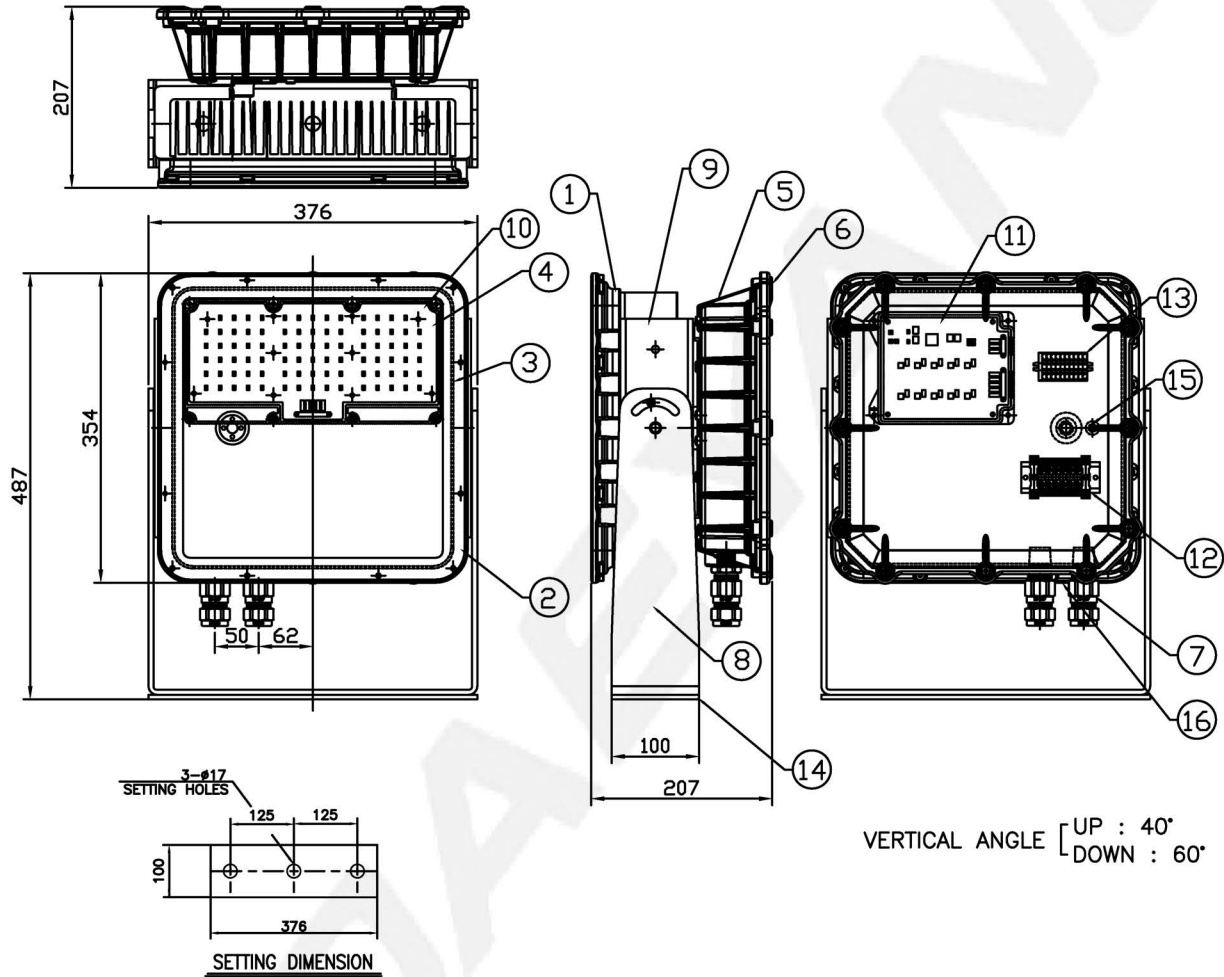


CAPACITY	SYMBOL/SERIAL NO.	CIRCUIT DIAGRAM
AC220V, 50/60Hz		
125W		



16	OUTSIDE EARTH BOLT	STAINLESS STEEL 316	1	M5	8	ARM	STAINLESS STEEL 316	1	
15	INSIDE EARTH BOLT	STAINLESS STEEL 304	1	M4	7	CABLE GLAND	BRASS	2	0S-E1UF 16 ø9~15.5
14	ANTI-VIBRATION PACKING	C.R.	1	5mm	6	LED driver CASE COVER	ALUMINIUM	1	
13	TERMINAL BLOCK	-	1		5	LED driver CASE	ALUMINIUM	1	
12	TERMINAL BLOCK	-	1		4	FRONT GLASS	GLASS	1	
11	LED driver	-	1		3	GLOBE PACKING	SILICONE	1	
10	LED module	-	1	6,000±300K	2	GLOBE FRAME	STAINLESS STEEL 316	1	
9	BODY BRACKET	STAINLESS STEEL 316	2		1	BODY	ALUMINIUM	1	
NO	NAME OF PARTS	MATERIAL	Q'TY	REMARKS	NO	NAME OF PARTS	MATERIAL	Q'TY	REMARKS

APPROVED	O. J. KWON	UNIT	MM	TITLE: EXPLOSION PROOF LED FLOODLIGHT (Ex eb mb IIC T4 Gb) FOR MARINE USE			
CHECKED	J. Y. LEE	SCALE	N/S				
DESIGN	J. C. LEE	COLOR	N-9.3				
DATE	2019.12.11	IP	66/67				
				MODEL NO.	EXLED-PF125AL-220AWHFM16UF2	WEIGHT	25Kg
				DRAWING NO.	LR6530087	SHEET NO.	8